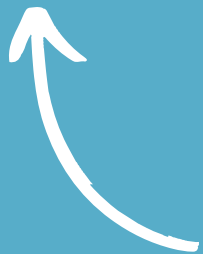


The logo features a stylized tree with a dark blue trunk and branches. The branches are shaped like hands reaching upwards. The foliage is composed of several overlapping circles in shades of green and yellow. The text "GO GREEN WEEK" is written in white, bold, sans-serif capital letters, centered over the tree.

GO GREEN WEEK

28th April – 2nd May

Tuesday 29th April



In Love with the World – Interactive Workshop on Hope & Resilience

 13:00–13:45

Contemplation Space, West Downs Centre

If you're feeling anxious about climate change and its current or future impact, you're not alone. Come along to this interactive workshop where we'll explore how to stay connected to our feelings, build resilience, and nurture hope.

Both students and staff
are welcome, sign up
using our Microsoft
Forms link



Wednesday 30th April



Green Spaces Litter Pick



12:30–13:30

Meet outside The Stripe

Join us in our Go Green Week litter pick. By taking part in this litter pick, you're not just helping to beautify the campus and surrounding areas—you're actively contributing to a safer environment for some of the UK's most loved and vulnerable creatures.

Sign up through our Microsoft Forms link which has all the details you need.



Thursday 1st May

Biodiversity Wellness Walk

 12:30–13:30

Meet in the KAC reception

Join our Grounds Team for a relaxing wellness walk around campus, designed to educate students and staff about the biodiversity we have right here at Winchester.

Discover the species that call our campus home and learn how they support local wildlife. You'll also get to see features like our bird boxes and hedgehog highways up close!

This event has limited spaces so please sign up through the Microsoft Forms link here.



We look forward to seeing you at Go Green Week 2025!

Your Event Links:

**Sign up to the
interactive
workshop here**



**Sign up to the litter
pick here**



**Sign up to the
biodiversity
wellness walk here**



For up to date info follow us on



environment_uow

Contact us at

Environment@winchester.ac.uk